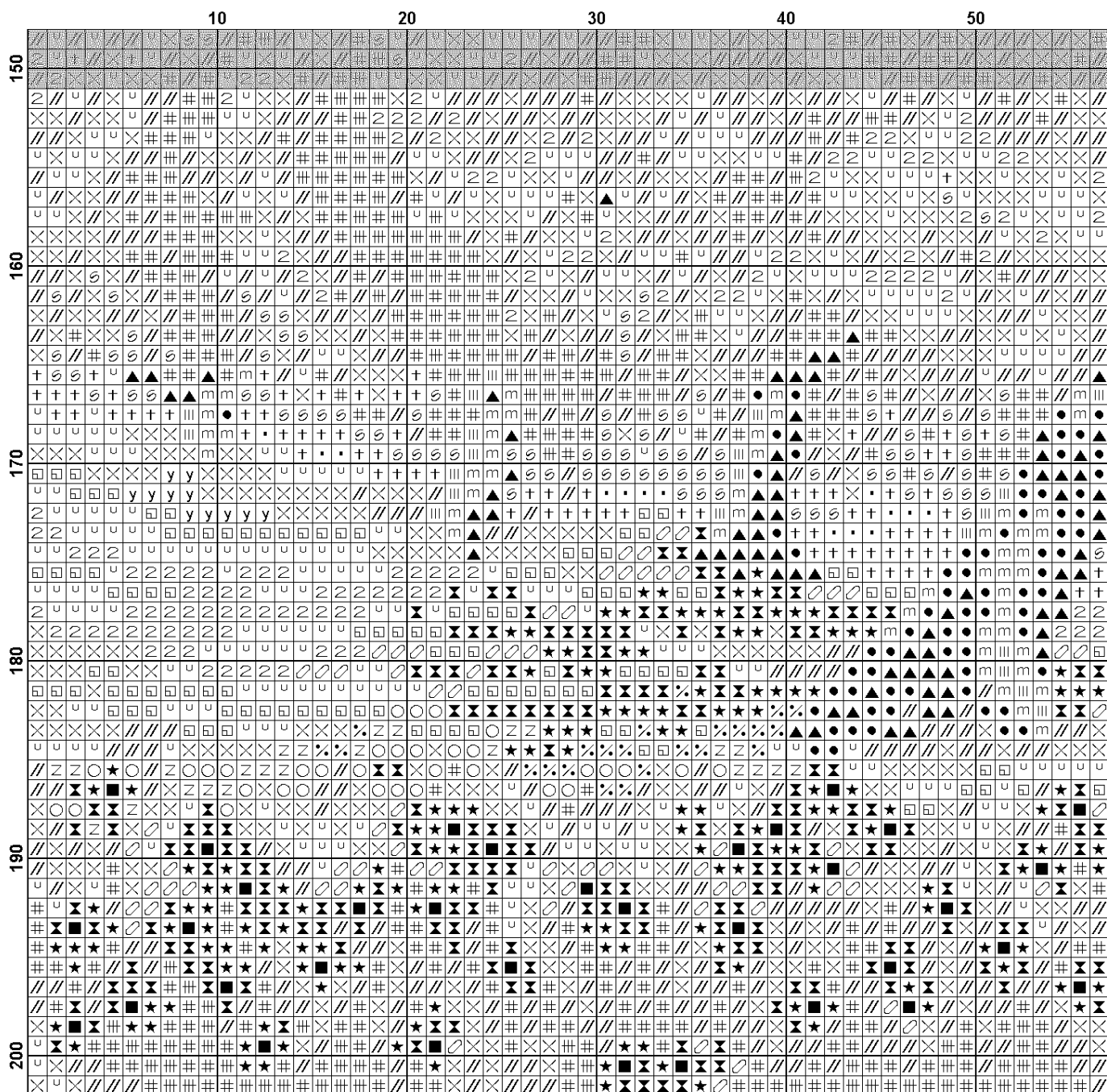
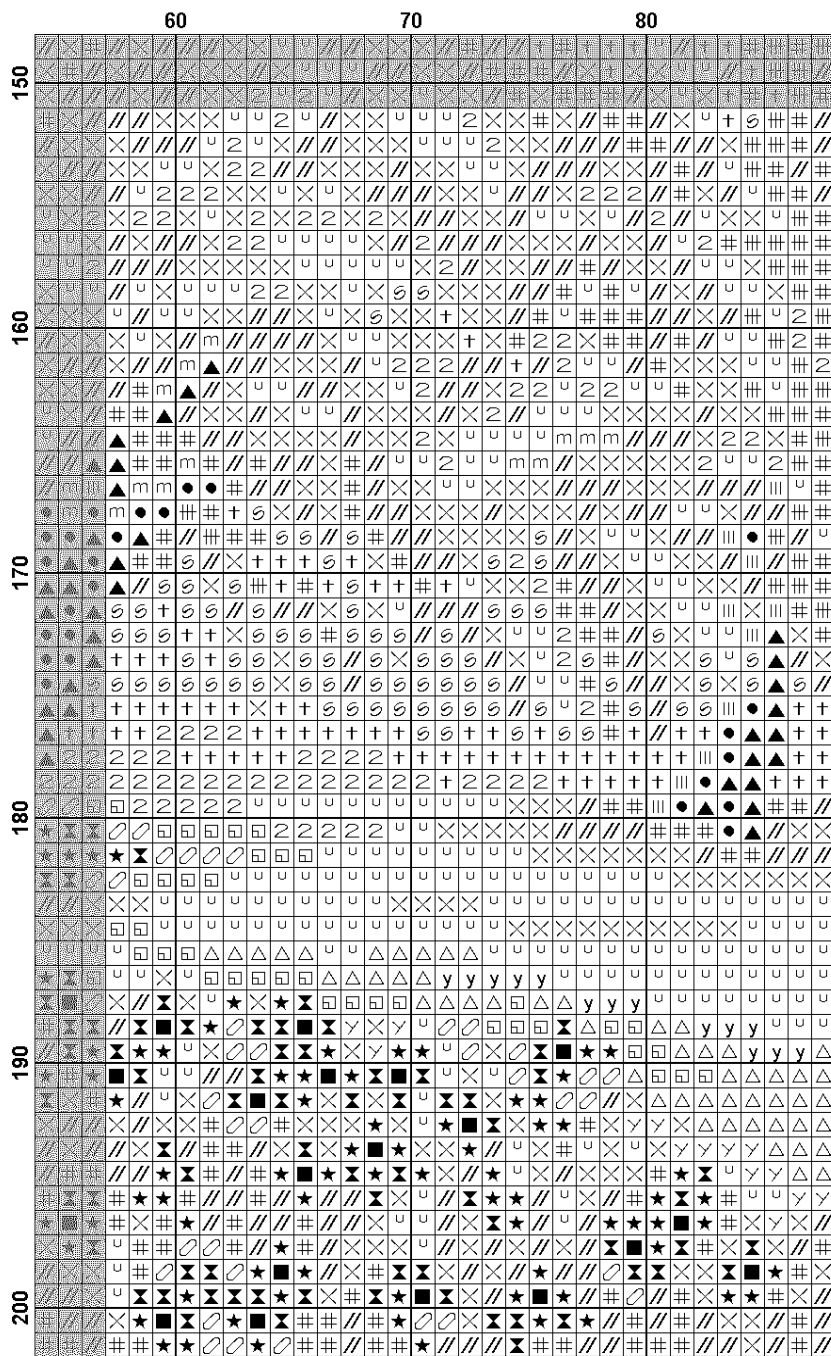


(6)

	60																														70																														80																													
80																																																																																										





**Pattern Name:** PCE0808 Italian olive groves  
**Company:** Anchor  
**Copyright:** перенабор by Йогуртка  
**Fabric:** Aida 14, White  
 88w X 202h Stitches  
**Size:** 14 Count, 15.97w X 36.65h cm

**Floss Used for Full Stitches:**

Symbol	Strands	Type	Number	Color
	2	Anchor	1	Snow White
	2	Anchor	46	Crimson Red
	2	Anchor	47	Carmine Red
	2	Anchor	214	Juniper LT
	2	Anchor	216	Juniper Med
	2	Anchor	253	Parrot Green VY LT
	2	Anchor	266	Avocado Med LT
	2	Anchor	267	Avocado Med
	2	Anchor	268	Avocado Med DK
	2	Anchor	278	Olive Green LT
	2	Anchor	279	Olive Green Med LT
	2	Anchor	280	Olive Green Med
	2	Anchor	281	Olive Green DK
	2	Anchor	298	Jonquil DK
	2	Anchor	300	Citrus LT
	2	Anchor	305	Topaz LT
	2	Anchor	332	Blaze LT
	2	Anchor	338	Terra Cotta
	2	Anchor	339	Terra Cotta Med
	2	Anchor	347	Bark LT
	2	Anchor	358	Coffee
	2	Anchor	359	Coffee Med
	2	Anchor	361	Nutmeg LT
	2	Anchor	369	Spice Med
	2	Anchor	370	Spice Med DK
	2	Anchor	382	Fudge DK
	2	Anchor	387	Ecru
	2	Anchor	403	Black
	2	Anchor	846	Fern Green DK
	2	Anchor	862	Laurel Green DK
	2	Anchor	1088	Taupe VY DK
	2	Anchor	9575	Brick Med LT
	1	Anchor	846	Fern Green DK
	1	Anchor	403	Black

**Floss Used for Half Stitches:**

Symbol	Strands	Type	Number	Color
	2	Anchor	120	Blueberry LT
	3	Anchor	128	Cobalt Blue LT
	2	Anchor	129	Cobalt Blue
	2	Anchor	145	Delft Blue LT
	2	Anchor	214	Juniper LT
	2	Anchor	216	Juniper Med
	2	Anchor	253	Parrot Green VY LT
	2	Anchor	266	Avocado Med LT
	3	Anchor	267	Avocado Med
	2	Anchor	305	Topaz LT
	2	Anchor	869	Amethyst LT
	2	Anchor	870	Amethyst
	2	Anchor	871	Amethyst Med LT
	2	Anchor	9575	Brick Med LT

**Floss Used for Back Stitches:**

Symbol	Strands	Type	Number	Color
--------	---------	------	--------	-------

■ — 1 Anchor 382 Fudge DK